

# TWIN QUASAR and TWIN VEGA

Chain actuator with encoder

Twin Quasar : Force 600 N - Maximum stroke 500 mm

Twin Vega : Force : 600 N - Maximum stroke 300 mm



- Chains in double stainless steel links.
- The control electronic circuit synchronizes the speed of the motors through encoder.
- Anodized (silver) or painted (white or black) aluminium casing.
- The manual closing position regulation is not required: the stop in closing position is regulated by an electronic limit switch.
- Being provided with two chains, both **TWIN QUASAR** and **TWIN VEGA** are particularly suitable for very wide windows.  
For a better aesthetic result, on request, it is possible to supply actuators with customized distance between the chains (minimum 720 mm for **TWIN QUASAR** and 480 mm for **TWIN VEGA**) in order to get same width of the window.
- Supplied with 3 m cable and pivoting brackets.
- The installation without brackets is possible only if the height of the vent is at least 1500 mm for **TWIN QUASAR** and 900 mm for **TWIN VEGA**.
- **TWIN QUASAR DC F-SIGNAL** and **TWIN VEGA DC F-SIGNAL** are special versions with opening and closing feedback signal (free potential, maintained contact), activated by the current limit.
- In case of BMS-Building Management System avoid repetitive commands in the same direction. For further information contact our Tech. Dept.
- In case of vents with four-bar hinges, please contact our Technical Dpt.
- If installed on PVC windows, the profile has to be reinforced.
- Available on request Synchro version with different force level (push or pull) and different speeds (fixed or selectable between maximum and limited speed). Speed reduction enable quiet actuators.



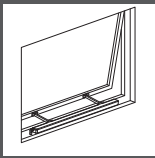
	<b>TWIN QUASAR AC</b>	<b>TWIN QUASAR DC</b>	<b>TWIN QUASAR DC F-SIGNAL</b>	<b>TWIN VEGA DC</b>	<b>TWIN VEGA DC F-SIGNAL</b>
VOLTAGE SUPPLY	100 Vac - 240 Vac	24 Vdc ±10%	24 Vdc ±10%	24 Vdc ±10%	24 Vdc ±10%
ELECTRIC CONNECTION	3 wires + earth	2 wires	2+3 wires	2 wires	2+3 wires
OPERATION		by polarity inversion	by polarity inversion	by polarity inversion	by polarity inversion
STROKE	500 mm	500 mm	500 mm	300 mm	300 mm
FORCE (push and pull action)	600 N	600 N	600 N	600 N	600 N
SPEED	~ 15 mm/s	~ 15 mm/s	~ 15 mm/s	~ 9 mm/s	~ 9 mm/s
CURRENT ABSORPTION (with max load)	0,9 A - 0,4 A	1,8 A	1,8 A	1,4 A	1,4 A
PARALLEL CONNECTION	YES	YES	YES	YES	YES
LIMIT STOP	Electronic	Electronic	Electronic	Electronic	Electronic
SAFETY STOP	Electronic	Electronic	Electronic	Electronic	Electronic
FEEDBACK SIGNAL			Open/close		Open/close
PROTECTION CLASS	IP 30	IP 30	IP 30	IP 30	IP 30

**Part No.**

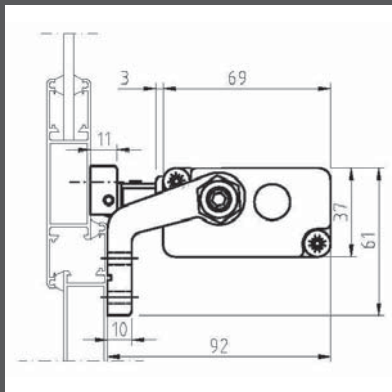
SILVER ANODIZED	40989D	40992G	41310C	41245P	41313F
BLACK RAL 9005	40990E	40993H	41311D	41246Q	41314G
WHITE RAL 9010	40991F	40994I	41312E	41247R	41315H



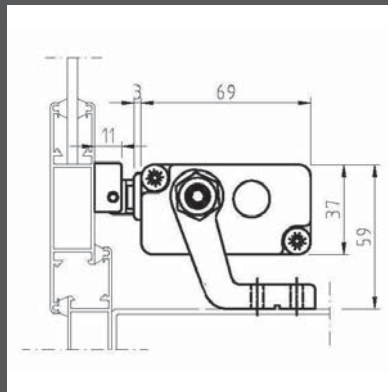
## Installation examples



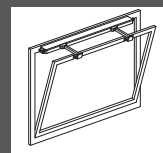
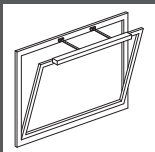
Top hinged window



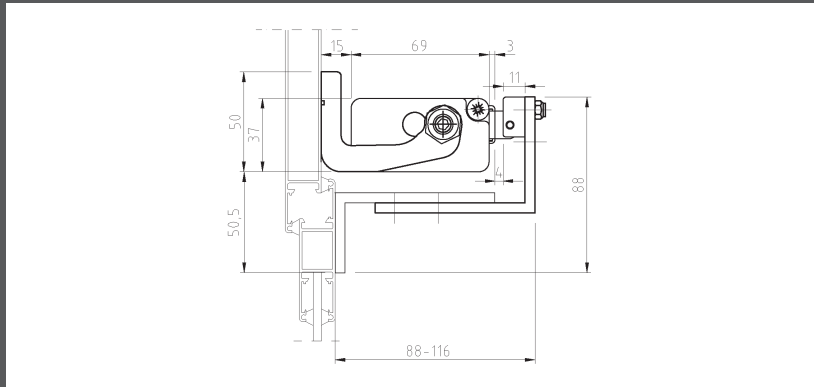
On the frame with pivoting brackets included



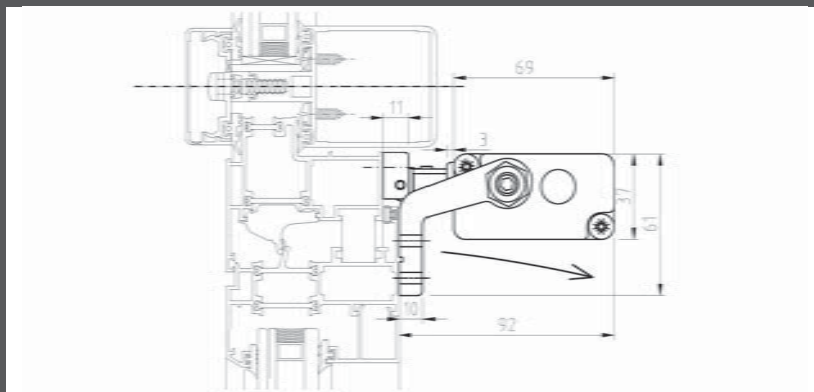
On windowsill with pivoting brackets included



Bottom hinged windows



On the frame with brackets for bottom hinged windows



On the vent with pivoting brackets included

**⚠** The instructions for a safe installation are included in the section “SECURITY WARNINGS”

### SPECIFICATION PROSPECT

Electric chain actuator Ultraflex Control Systems named Twin Quasar with two chains in double stainless steel links and electronic circuit for the two internal motors control. Force 600 N. Stroke 500 mm. Voltage supply 100-240 Vac or 24 Vdc. Electronic limit stop and electronic stop in the intermediate positions in case of overload. Pivoting brackets included. Parallel connection. Aluminium casing anodized or painted. Conform to 2006/95/CE and 2004/108/CE directives (the 24 Vdc version is conform to 2004/108/CE directive).

Electric chain actuator Ultraflex Control Systems named Twin Vega with two chains in double stainless steel links and electronic circuit for the two internal motors control. Force 600 N. Stroke 300 mm. Voltage supply 24 Vdc. Electronic limit stop and electronic stop in the intermediate positions in case of overload. Pivoting brackets included. Parallel connection. Aluminium casing anodized or painted. Conform to 2004/108/CE directive.