

Instructions

Chain drive series ECD-J

Type: Basic

(24 VDC)



Please order bracket sets separately

Safety Notes



- **Operating voltage 24 VDC! Don't connect directly to grid!**
- Connection must be carried out by authorized electricians.
- It's necessary to ensure that people keep away from the operation area of the drives. Danger of violent pressure in accessible area!
- Use only in dry rooms.

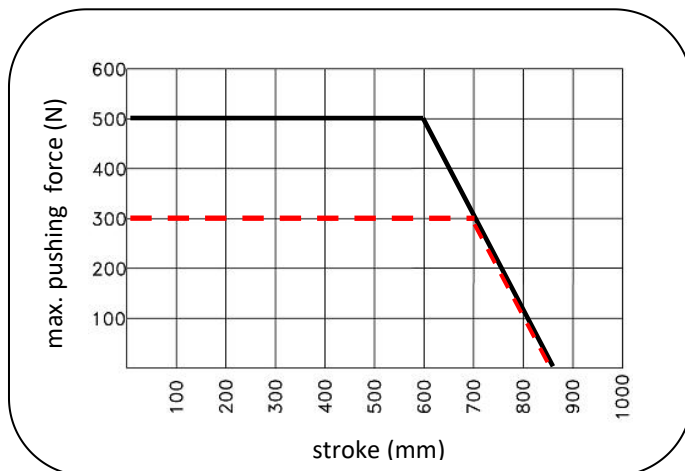
Application area

- For opening and closing of facade and roof windows
- Suitable for smoke and heat ventilation and daily ventilation

Stroke-pushing force diagram



- **Maximum pushing force of chain is dependent on stroke and does not correspond to the maximum pushing force of drive!**



Features

- ✧ Built-in electronic overload cutoff
- ✧ No-load life-cycle 30000, full-load 10000 (double strokes)
- ✧ Chain anti-drop function (patent)
- ✧ High clamping force
- ✧ IP32 protection level
- ✧ The chain is made with high-strength material, surface antiseptic treatment, double link chain (stainless steel is available)
- ✧ Aluminium alloy shell with surface anodizing treatment (color can be custom made)
- ✧ Temperature range: $-5^{\circ} \sim +50^{\circ}$
- ✧ Optional installations
- ✧ Simple and elegant design

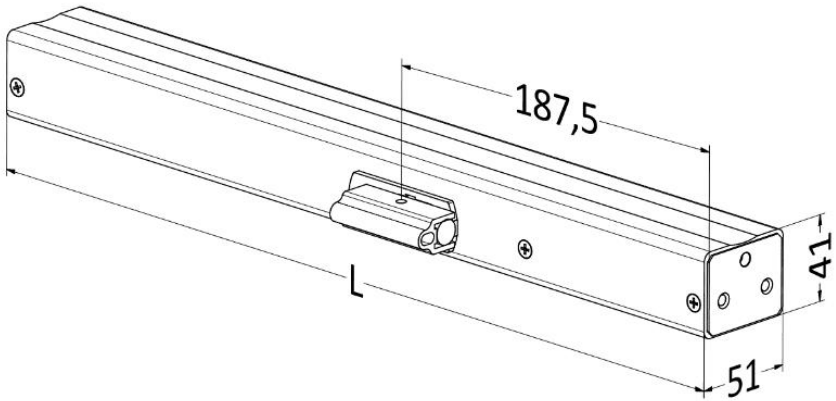
Technical data

Type	Current	Push force	Pull force	Stroke length	Speed
ECD 300/350	1.0 A	300 N	300 N	350 mm	12 mm/s
ECD 300/600	1.0 A	300 N	300 N	600 mm	12 mm/s
ECD 300/800	1.0 A	--	300 N	800 mm	12 mm/s
ECD 300/1000	1.0 A	--	300 N	1000 mm	12 mm/s
ECD 300/1200	1.0 A	--	300 N	1200 mm	12 mm/s
ECD 500/350	1.4 A	500 N	500 N	350 mm	12 mm/s
ECD 500/600	1.4 A	500 N	500 N	600 mm	12 mm/s
ECD 500/800	1.4 A	--	500 N	800 mm	12 mm/s
ECD 500/1000	1.4 A	--	500 N	1000 mm	12 mm/s
ECD 500/1200	1.4 A	--	500 N	1200 mm	12 mm/s

- Voltage: 24 VDC $\pm 15\%$
- Locking force: 1000 N
- Lifecyle: >10000 double strokes
- Protective class: IP32
- Temperature range: $-5^{\circ}\text{C} \sim +50^{\circ}\text{C}$

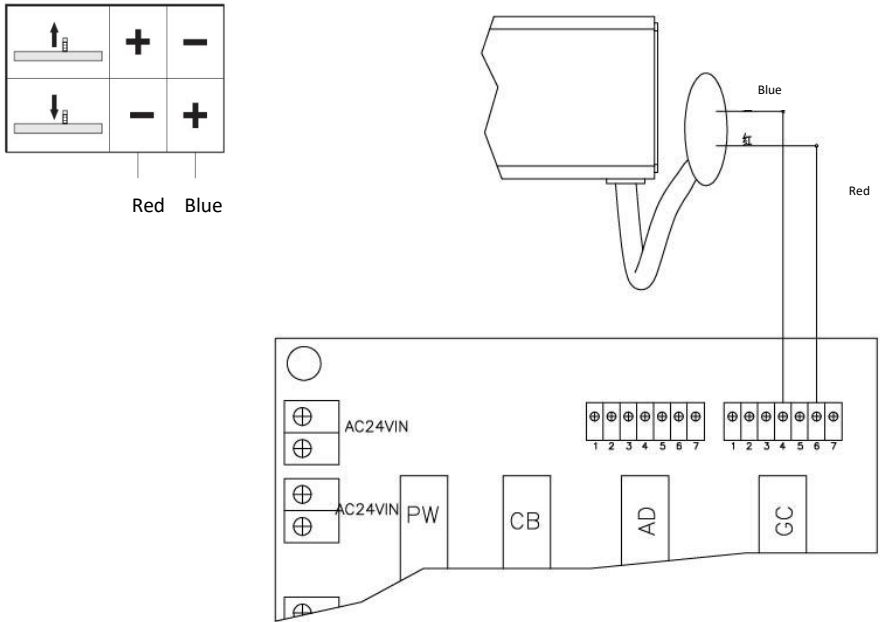
Dimensions of type **ECD**

Stroke	Length L
350 mm	436 mm
600 mm	561 mm
800 mm	661 mm
1000 mm	766 mm
1200 mm	866 mm

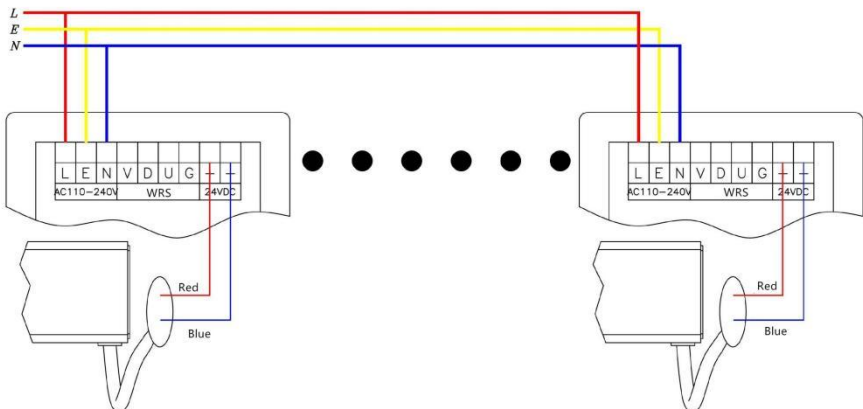


Wiring for type ECD-J

Option A: Connect with Control Cabinet_HVS



Option B: Connect with TRC

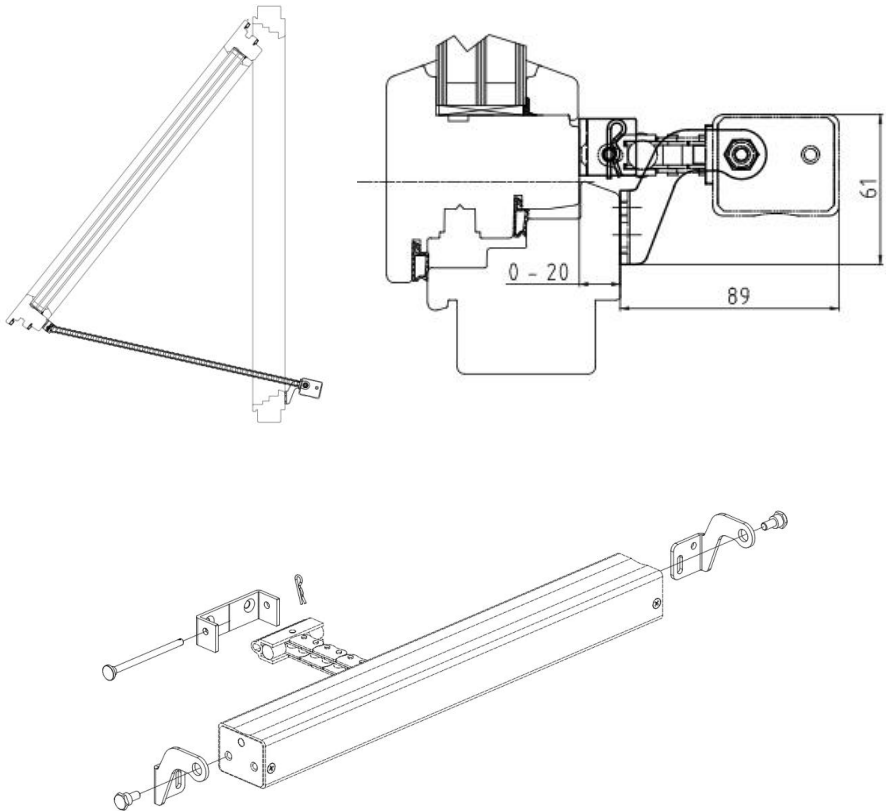


Mounting information

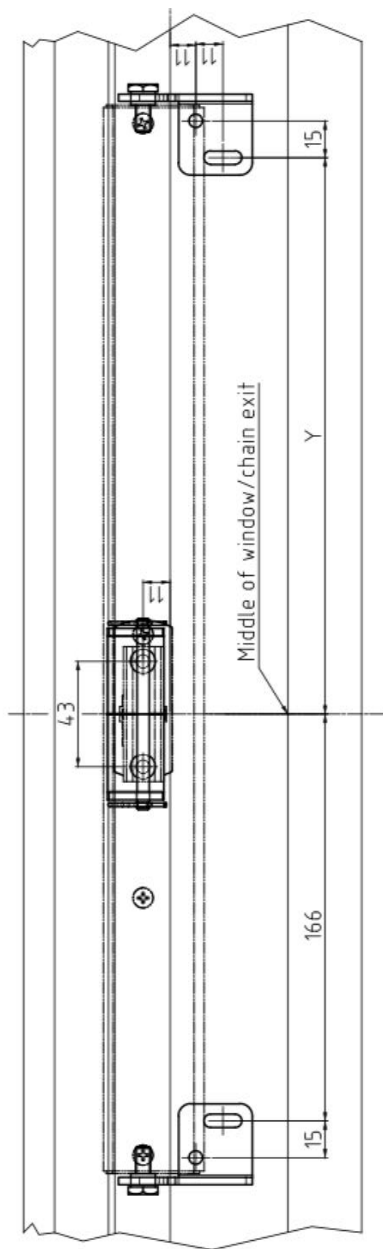
Application	Bracket Set
Outwards opening window, top hung	HMB-HCVW-01
Inwards opening window, bottom and side hung	HMB-HCVW-02
Skylight	HMB-HCVW-03

Please be aware that all bracket sets don't include the screw for fixing the bracket and frame. Choose proper screws according to frame material!

HMB-HCVW-01

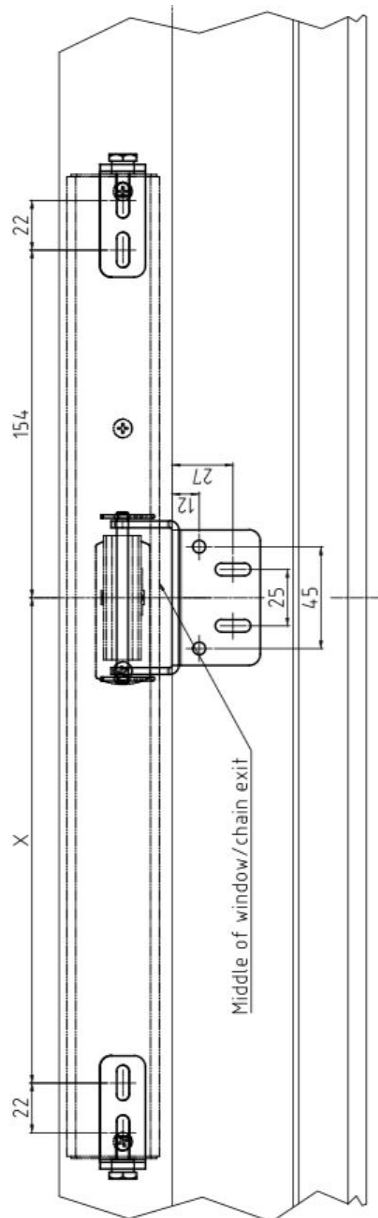


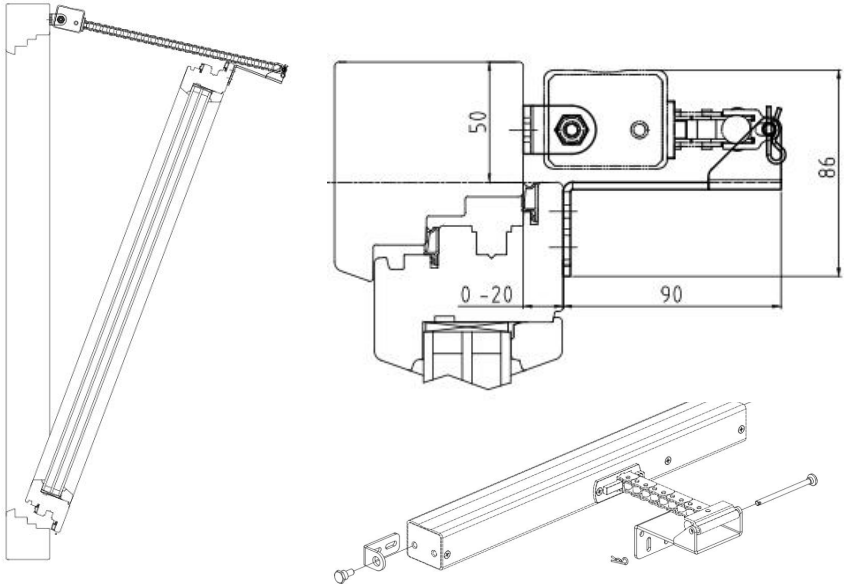
Stroke	Y
350 mm	227 mm
600 mm	352 mm
800 mm	452 mm
1000 mm	557 mm
1200 mm	657 mm



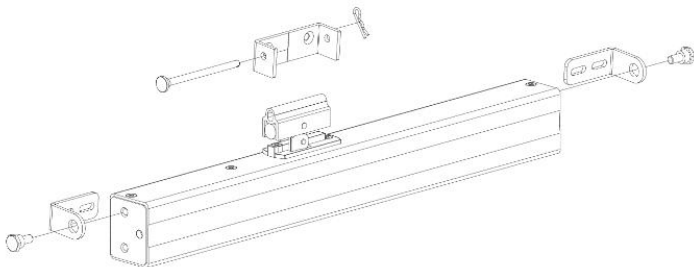
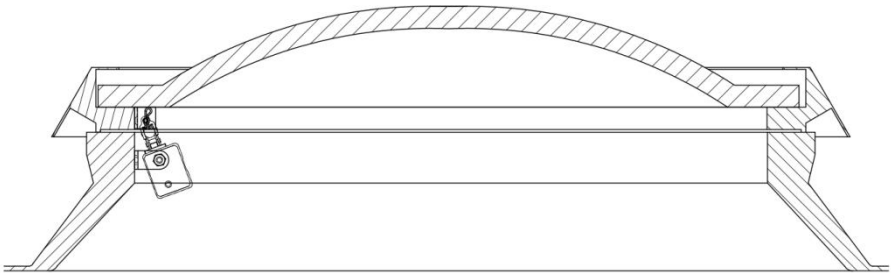
HMB-HCVW-02

Stroke	X
350 mm	215 mm
600 mm	340 mm
800 mm	440 mm
1000 mm	545 mm
1200 mm	645 mm

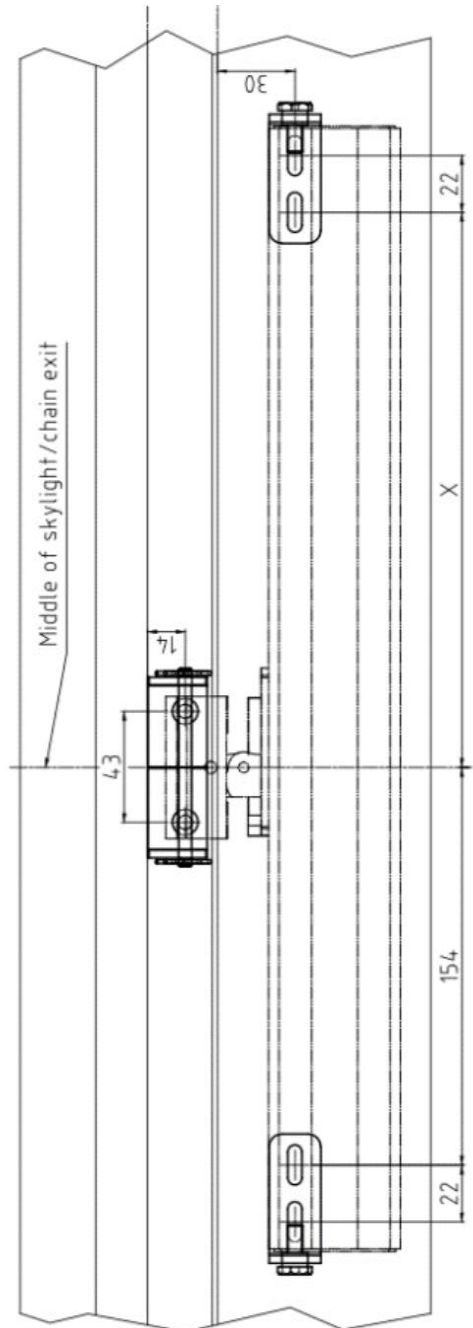
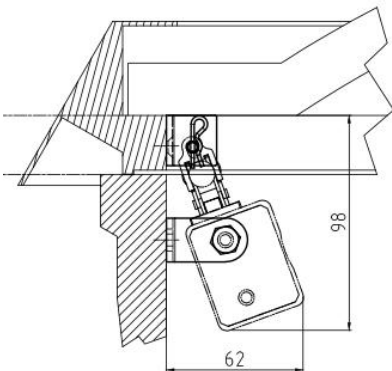




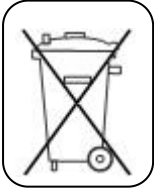
HMB-HCVW-03 for skylights



Stroke	X
350 mm	215 mm
600 mm	340 mm
800 mm	440 mm
1000 mm	545 mm
1200 mm	645 mm



Disposal



Electrical equipment, accessories and packaging should be recycled for environment protection!

Don't dispose electrical equipment into household waste!

Only for EU-Countries: According to the European guideline 2002/96/EG about waste electrical and electronic equipment and its implementation into national law, useless electrical and electronic equipment must be separately collected and recycled for environment protection.

Contact

Brelatronic

Nanjing Brela Electric Equipment Co., Ltd

Floor 3, No. 992

Qin Shui Ting Dong Road

211102 NANJING P.R China

Phone: +86 25 84306886

www.brelatronic.com.cn

©2015 Brelatronic

Revision: A22

Rights to technical modifications reserved